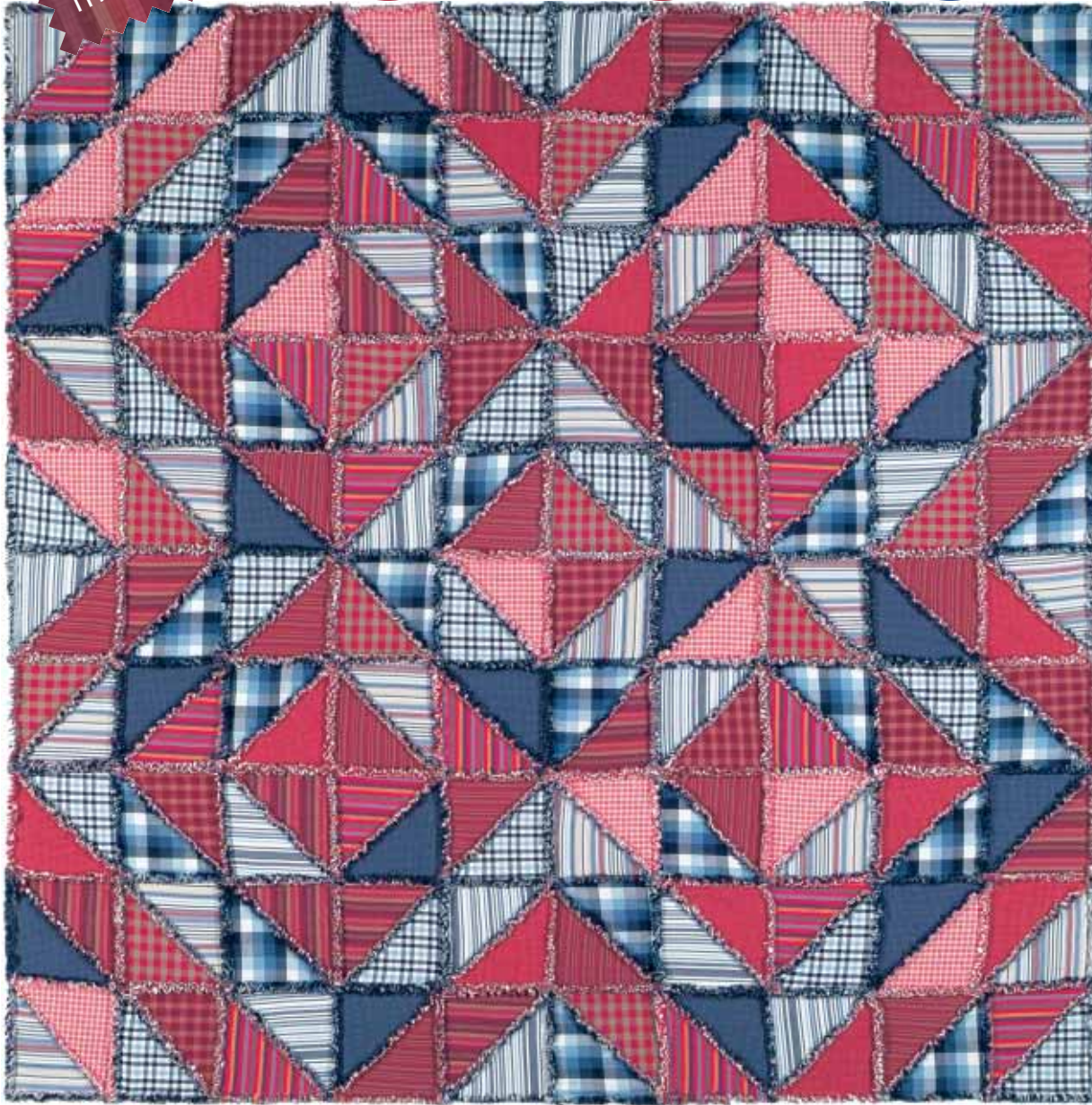




Zig-Zag Rag Quilt



Kona® Creative Threads used in this quilt:



CPN-3359-3 AMERICANA



CPN-3359-4 DENIM



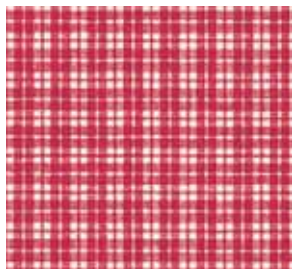
CPN-3360-3 DENIM



CPN-3362-3 DENIM



CPN-3366-3 NAVY



CPN-3366-7 RED



CPN-3367-6 CHILI



CPN-3368-6 CHILI

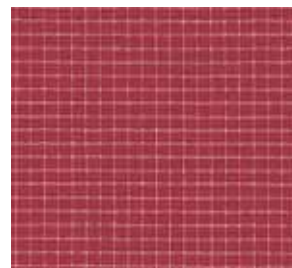


CPN-3368-14 CONFETTI

Kona® Creative Threads features fine Kona-quality cotton in yarn-dyed woven plaids and stripes. All patterns are shown approx. 1/2 actual size.



CPN-3369-2 CONFETTI



CPN-3498-1 RED



CPN-3498-2 NAVY



Zig-Zag Rag Quilt

Quilt and instructions by Linda Miller

FINISHED SIZE: approx. 72" square

FABRIC REQUIREMENTS

Kona® Creative Threads:

1½ yards each:

REDS

CPN-3366-7 Red

CPN-3367-6 Chili

CPN-3368-6 Chili

CPN-3368-14 Confetti

CPN-3369-2 Confetti

1¾ yards each:

CPN-3498-1 Red

7 yards of solid-color flannel ("filler flannel")

BLUES

CPN-3359-3 Americana

CPN-3359-4 Denim

CPN-3360-3 Denim

CPN-3362-3 Denim

CPN-3366-3 Navy

CPN-3498-2 Navy

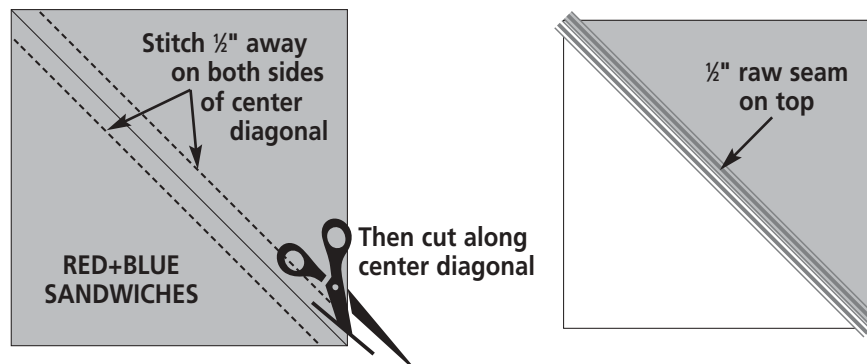
CUTTING INSTRUCTIONS

Cut the filler flannel into five 1½-yard pieces. You will have a 1¾-yard piece remaining. Trim off, very slightly, the folded edges with your rotary cutter. You will now have ten pieces of filler flannel that measure approximately 40" x 20", and two pieces of filler flannel that measure about 48" x 20".

Insert a single layer of filler flannel between two matching cotton fabrics to create a 3-layer fabric sandwich (cotton+filler flannel+cotton). Be sure to use the flannel sizes that match the corresponding cotton sizes. Cut eight 9" square sandwiches out of each of the red and blue 1½-yard sandwiches, and ten 9" squares out of each of the 1¾-yard red and blue sandwiches. You will now have a total of 50 red and 50 blue square sandwiches.

MAKING BLOCKS

Place a red sandwich on top of a blue sandwich, matching all sides. Mark the diagonal of each square, and sew ½" on either side of that line. Your two stitched rows will be 1" apart. Cut each square on the center diagonal (between the two lines of stitching) to create squares that are half red and half blue.



QUILT ASSEMBLY NOTE: All raw edges are on top of the quilt!

Lay out all your squares, following the photo for position of reds and blues to create the large zig-zag pattern.

Begin with the first vertical row and join the squares with a ½" seam allowance, keeping the diagonal seams and new seams on the same side. Check each row as you join the squares to be sure your placement is correct.

Join the rows horizontally, being sure to open all of your seams flat as you match the "intersections." You must be very careful at the "main intersections" where eight triangles all join. When you get there, be sure to go slowly. Don't pull your fabric or you'll break your needle. Just ease your way through and you should have no problem.

Stitch around the entire perimeter of your quilt with a ½"-to-¾" seam allowance.

RAGGING THE QUILT

It is very important to make your clips about ¼" apart and only ¼" deep. Only cut halfway into the depth of your seam allowance. Cut close to where the seams are stitched down to "free" them for ragging.

To cut open the "4-way" intersections, clip where the seams join and fold over. Be sure to clip open the fold to reduce bulk.

When you are done, trim the edges of the quilt so they are straight. Begin clipping the edges, ¼-½" apart and ¼" deep. At the corners, simply clip out a ¼" square, taking a chunk out of your corner. This area will "fill in" after you wash and dry your quilt.

WASHING

Wash your clipped quilt in cool water. Shake outdoors to remove loose threads, then tumble dry in the dryer. The first washing is very "linty," but it improves for the next one!